



DISMANTLING NOW . Minespec Parts Pty Ltd
HITACHI EX3600-5 BACKHOE



REPORT NO: 15-070-01

CLIENT: Minespec Parts

IDENTIFICATION: EX3600 Unit No. EX214

EXAMINATION DATE: 25th March 2015

SUBJECT: The partial inspection of Hitachi Excavator EX3600 Unit No. EX214 as per the Hitachi visual inspection manual. The inspections were carried out to detect any possible cracking.

TECHNICIAN: Tom Holden

Report By:



Owen Kavanagh

CONFIDENTIAL – CLIENT USE ONLY

Disclaimer: This report was prepared by Ultra NDT Pty Ltd expressly for the customer nominated on the front cover. Neither Ultra NDT nor any person acting on its behalf (a) makes any warranty, express or implied, with respect to the use of any of the information in this report or (b) assumes any liability with respect to the use of any information or methods in this report. Any recipient of this document, by their acceptance or use of this document, releases Ultra NDT Pty Ltd and their affiliates from any liability for direct, indirect, consequential or special loss or damage whether arising in contract, warranty, express or implied, tort or otherwise, and irrespectively of fault, negligence and strict liability. Electronic copies of this report are not official unless authenticated and signed by Ultra NDT and are not modified in any manner.

ULTRA NDT

TECHNICAL DATA

	Ultrasonic	Magnetic Particle	Visual
Test Specification:	AS 2207 2004	AS1171 2004	AS3978 2003
Procedure No:	UT002	MT001	VI001
Test Method:	As Per Procedure	Sustained Magnetism	Visual
Surface condition:	As in service	Wirebrushed clean	Painted
Equipment:	Sonatest SS250	Ardrox Magnet	Ruler, Camera
SerialNo:	I001229	1306CK	
Probes:	MB4se . 50282 Orion 70 . 408/04	.	.
Consumables:	Cellulose Paste	.	.
Accuracy:	±2%	.	.
Acceptance Standard:	Evaluate for cracking Hitachi Inspection Manual	Evaluate for Cracking	Evaluate for Cracking

Test Restrictions: Components inspected in service and as built restricts access to areas
Dirt, grease, oil and paint may mask crack indications

RESULTS:

AREAS INSPECTED

SIDE FRAMES

Cracking detected, Refer to the Side Frame drawing for details of the cracking

CARBODY

Cracking detected, Refer to the Carbody drawing for details of the cracking

MAIN FRAME

Cracking detected, Refer to the Main Frame drawing for details of the cracking

BOOM

Cracking was detected, Refer to the photograph numbers 1 . 5 for details of the cracking

NB. Limited access to the boom during the inspection due to excess grease and dirt build up.

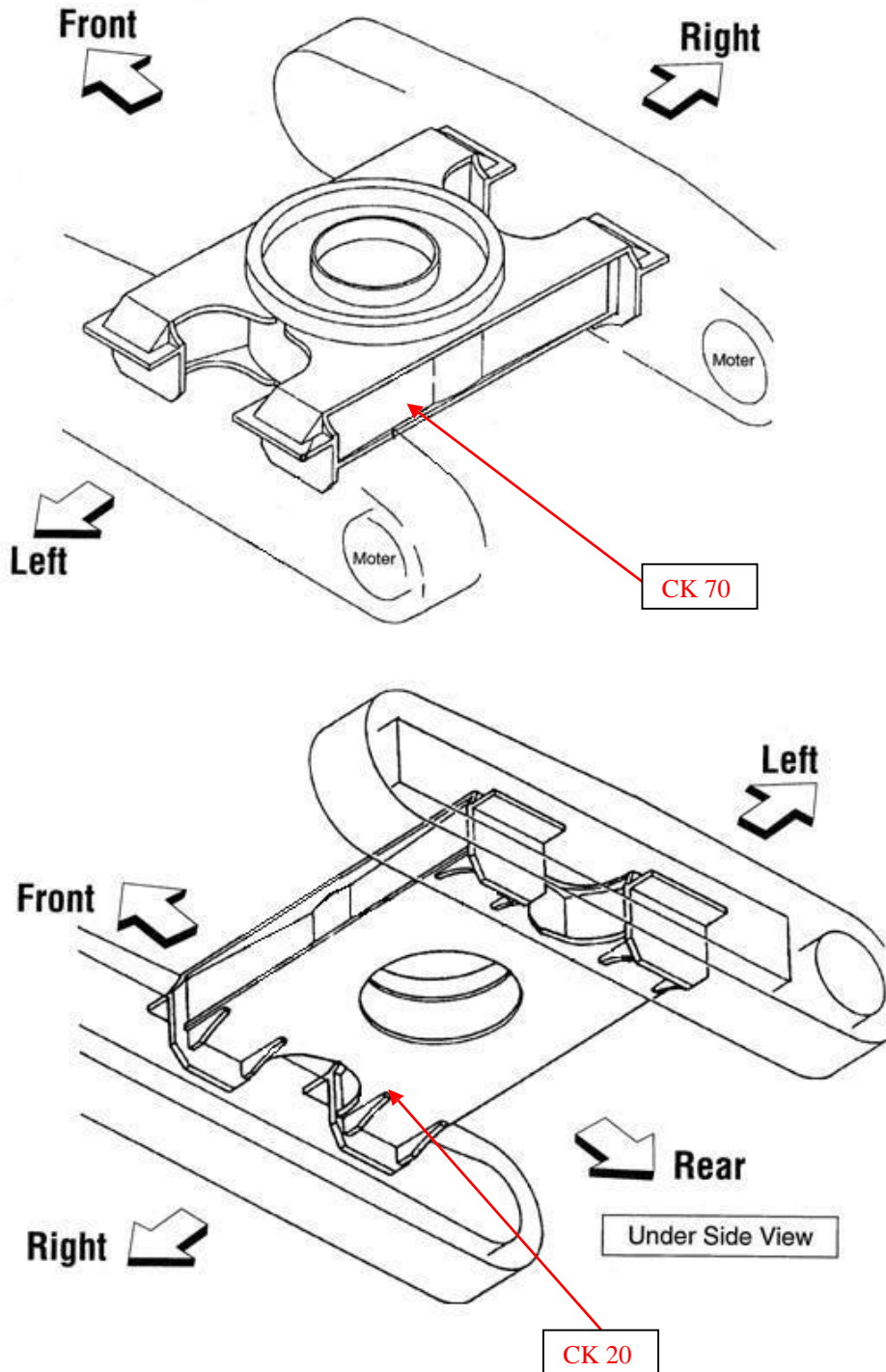
STICK

Very limited access to the Stick during the inspection due to time constraints and excess grease and dirt build up.

ULTRA NDT

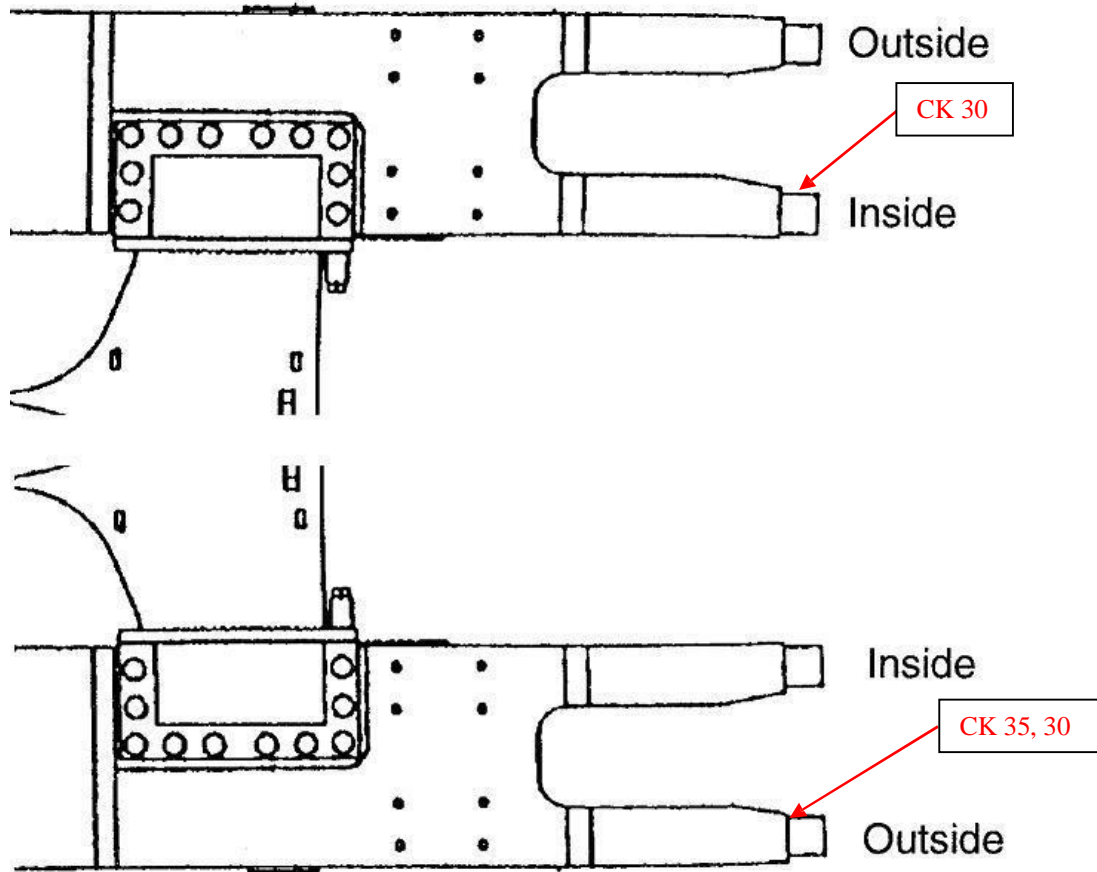
RESULTS OF INSPECTION – DRAWINGS

TRACK FRAME



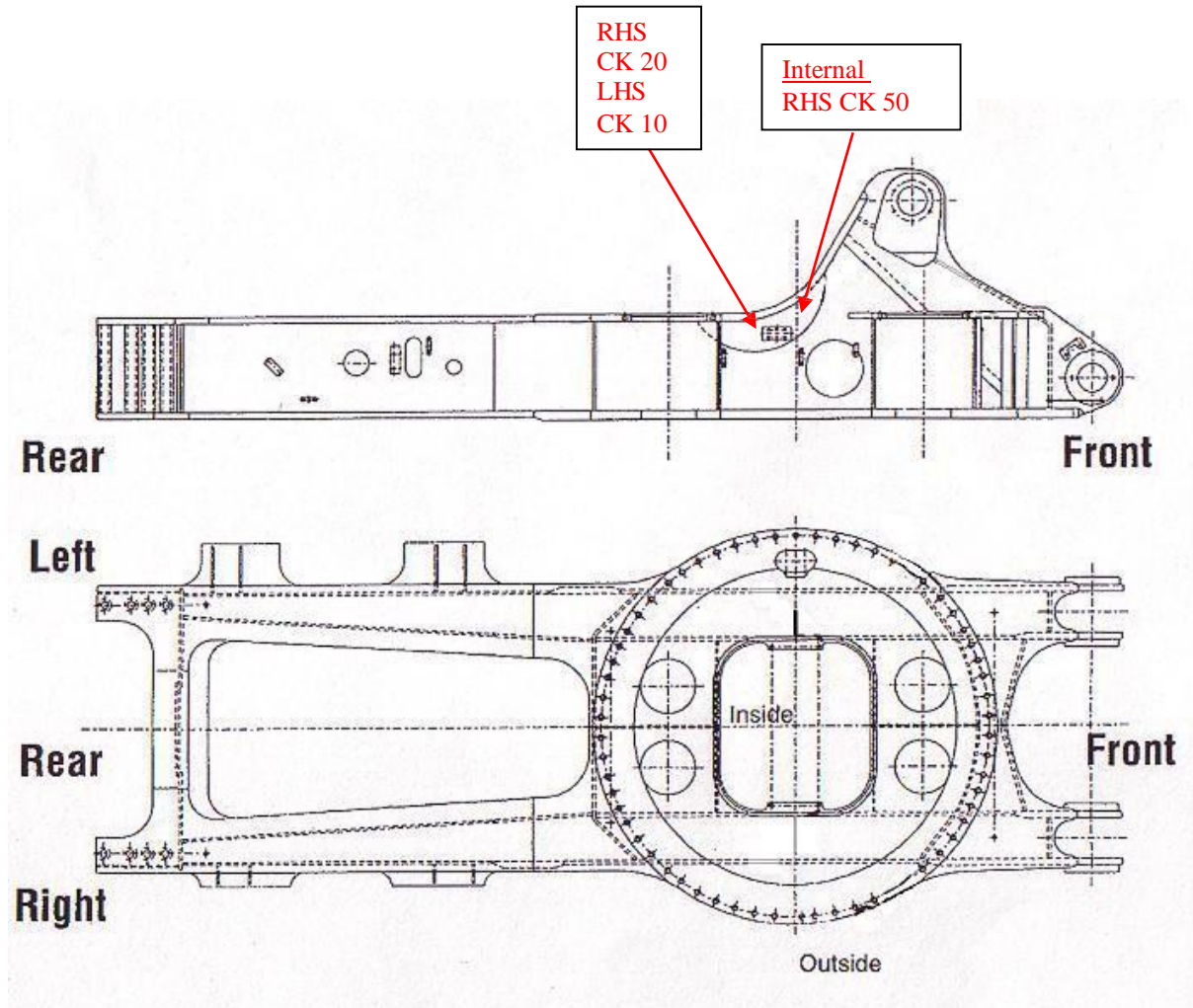
ULTRA NDT

SIDE FRAMES



ULTRA NDT

MAIN FRAME



ULTRA NDT

RESULTS OF INSPECTION – PHOTOGRAPHS

Photograph No. 1

View of the excavator as inspected



Photograph No. 2

View of the cracking detected in the Boom



ReportNo.15-070-01

Page6of9

ULTRA NDT

Photograph No. 3

Close up view of the 125mm long crack detected in the Boom



Photograph No. 4

View of cracking detected in a hydraulic line mount



ReportNo.15-070-01

Page7 of9

ULTRA NDT

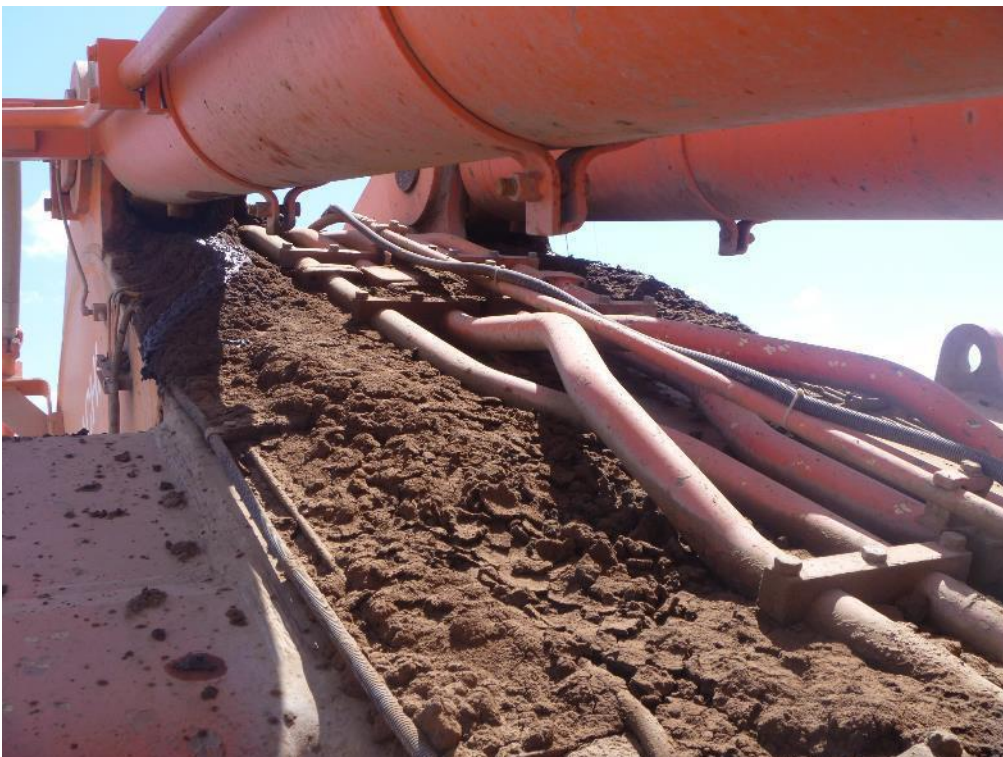
Photograph No. 5

View of cracking detected in the Left hand side of the Boom



Photograph No. 6

View of the access restrictions on the Boom



ULTRA NDT

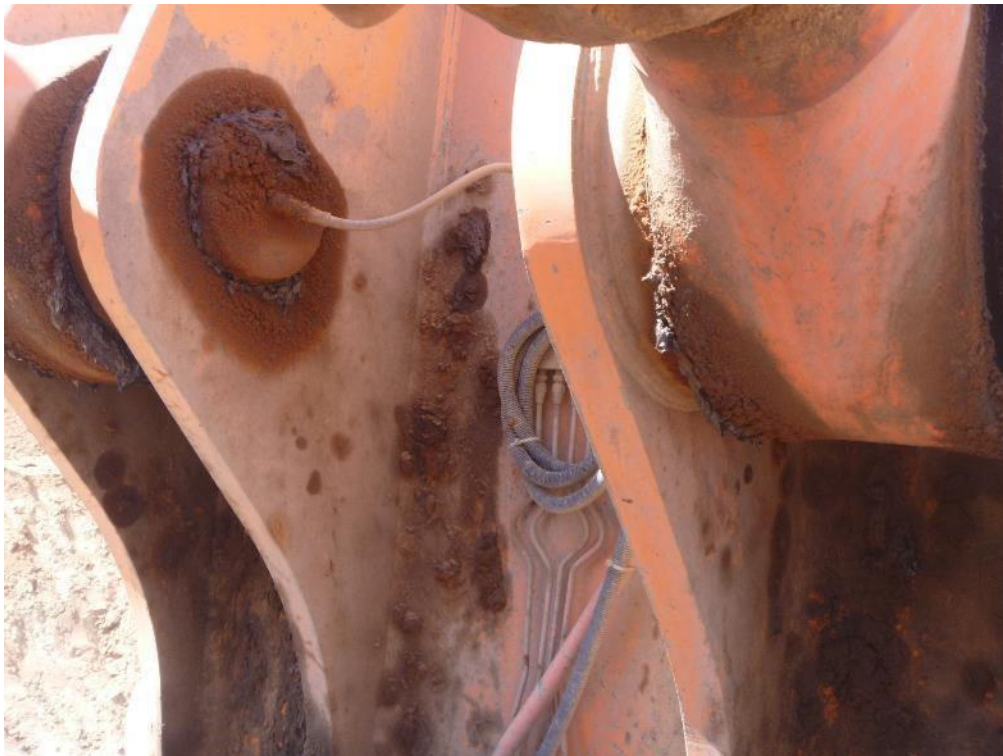
Photograph No. 7

View of the access restrictions on the Boom



Photograph No. 8

View of the access restrictions on the Stick



HITACHI EX3600-5 TRACK ASSESSMENT MINESPEC PARTS PTY LTD





LH Tracks



LH Track Shoe Tooth Profile



Tracks have been rebuilt by ETS.



LH Idler Assembly



LH Aftermarket Drive Tumbler. Teeth are oversized and cannot be measured accurately as the gauge does not fit correctly on the tooth.

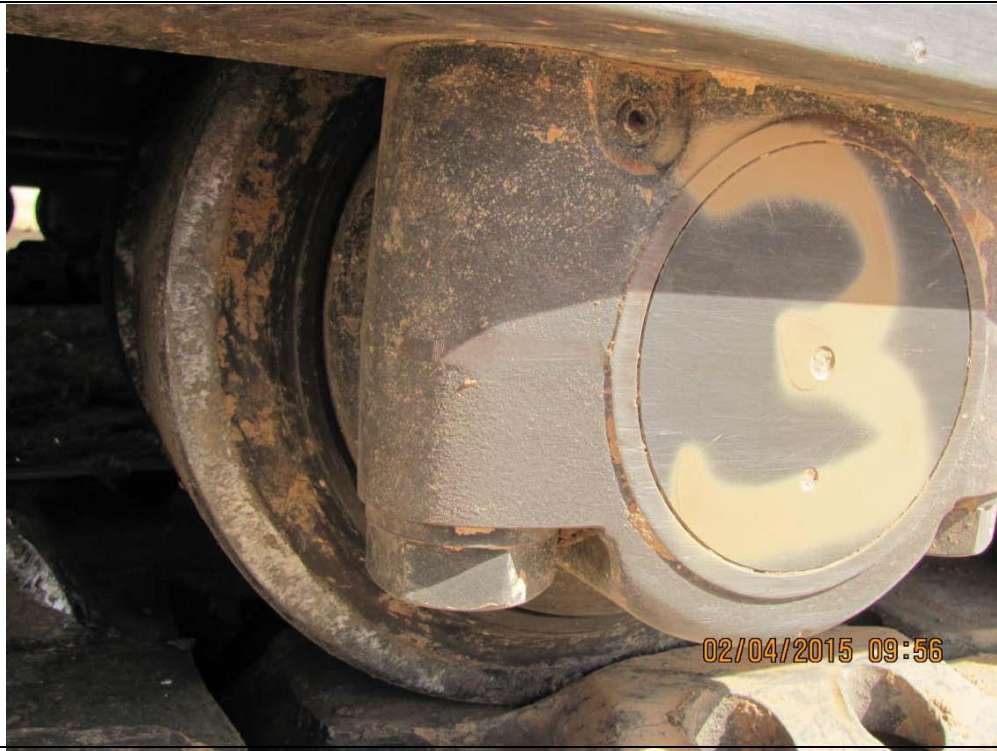




LH Lower Roller 1-
outer surface has
rolled edges



LH Lower Roller 2



LH Lower Roller 3



LH Lower Roller 4



LH Lower Roller 5



LH Lower Roller 6



LH Lower Roller 7



LH Lower Roller 8



LH Upper Roller 1



LH Upper Roller 2



LH Upper Roller 3



Minimal pin wear on the LH tracks.



RH Tracks



RH Track Shoe Tooth Profile



RH Aftermarket Drive
Tumbler Profile-
Worn outer surface.





RH Idler Assembly



RH Lower Roller 1



RH Lower Roller 2



RH Lower Roller 3

RH Lower Roller 4



RH Lower Roller 5





RH Lower Roller 6



RH Lower Roller 7



RH Lower Roller 8



RH Upper Roller 1



RH Upper Roller 2

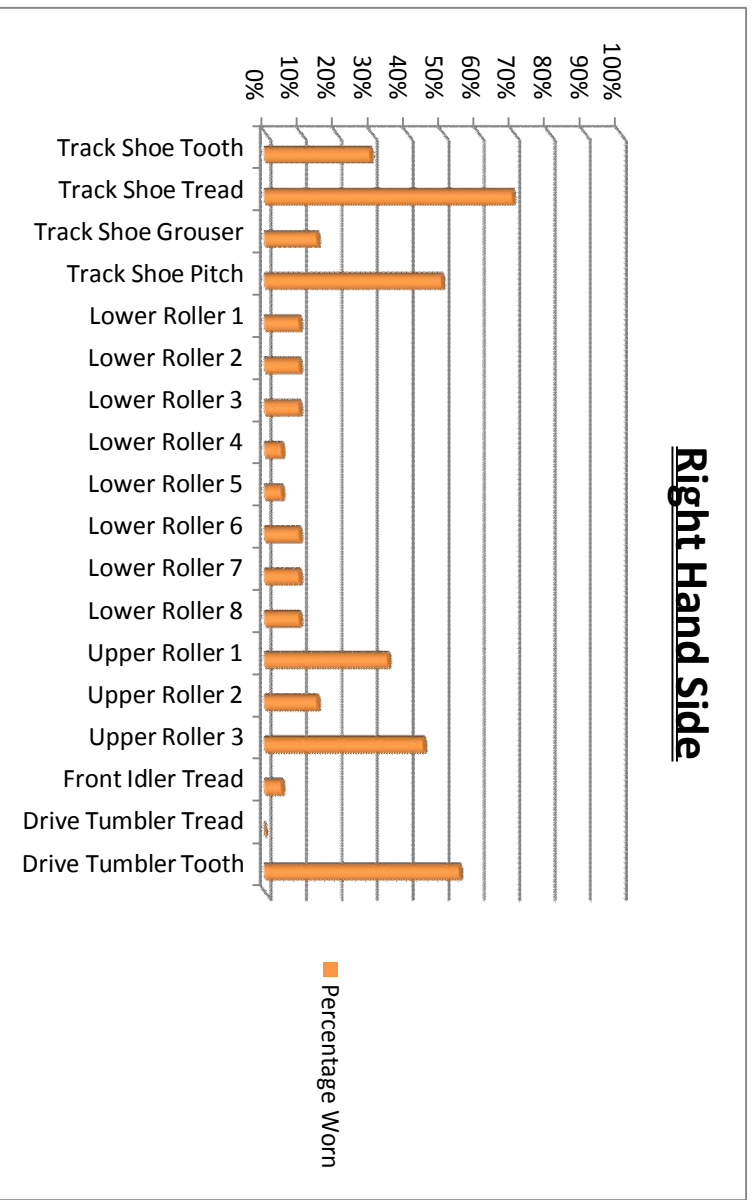
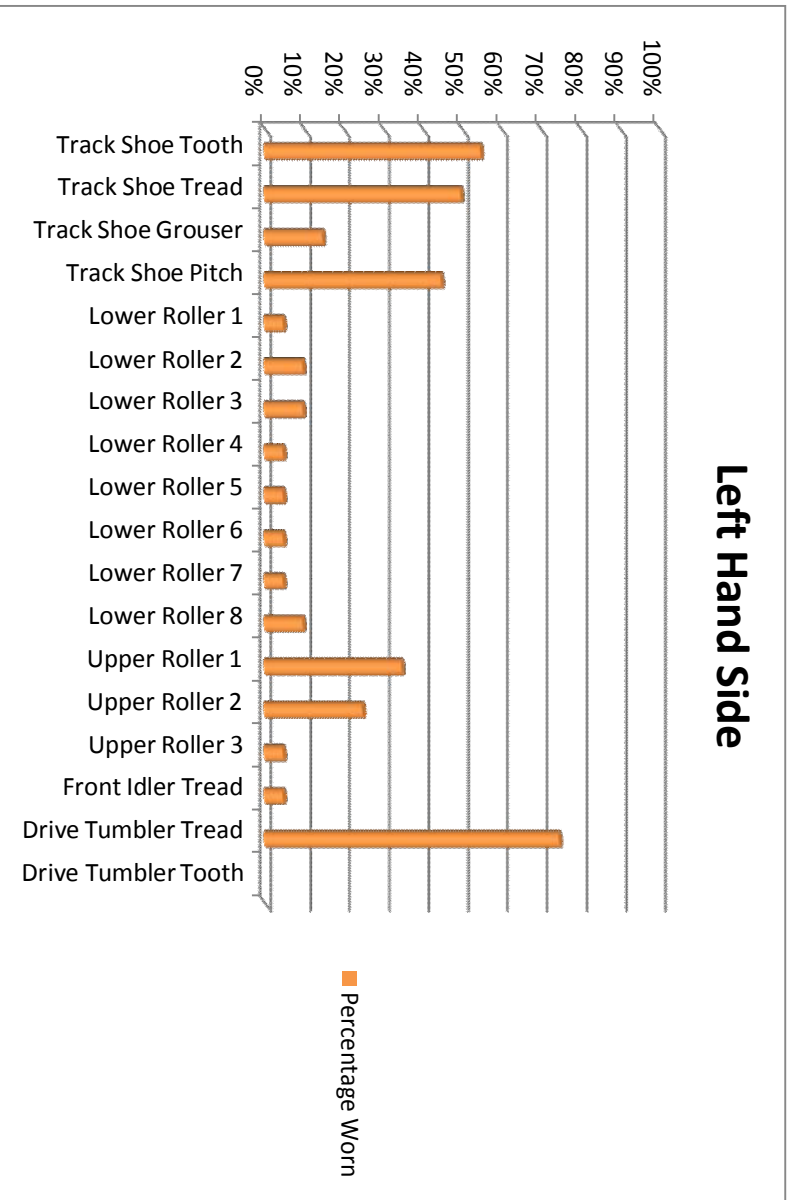


RH Upper Roller 3



Minimal Pin Wear on the RH tracks

Wear Graphs



Wear Report Next Page

Undercarriage Appraisal Report {Shovel Type Undercarriage}



Hitachi Construction Machinery (Australia) Pty Ltd

Details				
Customer Name	Minespec Parts Pty Ltd			
Customer Address	Braeside Road, Nebo QLD 4742			
Machine Model	EX3600-5			
Serial Number	*157	Front Alt Backhoe		Shoe widthmm
Jobsite Mine	Blackwater	Work digging		Handling Shot Material

Inspection Details	
Date of Inspection	02/04/2015
Dealer Name	HCA- Emerald
Inspected by	A Richards
Current HR Meter Reading	43,768 Hours
Date Previously Inspected	10/09/2013
HR Meter Reading Previous Inspection	40,378 Hours

Report	PreHnt Dimensions mm		Percent Worn %		Hours Now on Parts		Potential Hrs of Part Life	
	Lert	Right	Left	Right	Left	Right	Left	Right
Track Shoe Tooth Length 			55%	30%				
Track Shoe Tread 			50%	70%				
Track Shoe Grouser Height 			15%	15%				
Track Shoe Pitch 			45%	50%				
Lower Roller Tread Dia. 	1	1	5%	10%				
	2		10%	10%				
	3		10%	10%				
	4		5%	5%				
	5		5%	5%				
	6		5%	10%				
	7		5%	10%				
	8		10%	10%				
Upper Roller Tread Dia. 			35%	35%				
	2		25%	15%				
	3		5%	45%				
	4							
	5							
	6							
Front Idler Tread Diameter 			5%	5%				
Drive Tumbler Diameter 			75%	0%				
Drive Tumbler Tooth 			N/A	55%				
Track Adjustment	LH	mm	RH	mm	See Operator's Manual			

Shoe	
<input type="checkbox"/> Breakage	<input type="checkbox"/> Crack
<input type="checkbox"/> PinHoleWear	
Comments Tracks have been rebuilt by ETS.	

Lower Roller		
Turning History	181 Never	<input type="radio"/> Tuned @ Hr
Oil Leak	181 No	<input type="checkbox"/> Yes
Comments		

Upper Roller		
Flat Spot	181 No	<input type="checkbox"/> Yes
Oil Leak	181 No	<input type="radio"/> Yes
Comments		

Front Idler		
Oil Leak	<input type="radio"/> No	<input type="radio"/> Yes
Comments		

Drive Tumbler		
Mud Pack	181 No	<input type="checkbox"/> Yes
Comments RH aftermarket tumbler is too narrow. LH aftermarket Tumbler teeth are oversized and cannot be accurately measured		