



An Austin Engineering Ltd Company
Ph:+61-7 49526 222 Fax:61-7 49526 223
Web: www.austineng.com.eng
Address: 12-16 Progress Drive, Paget, Mackay, Queensland, 4740

A

A

B

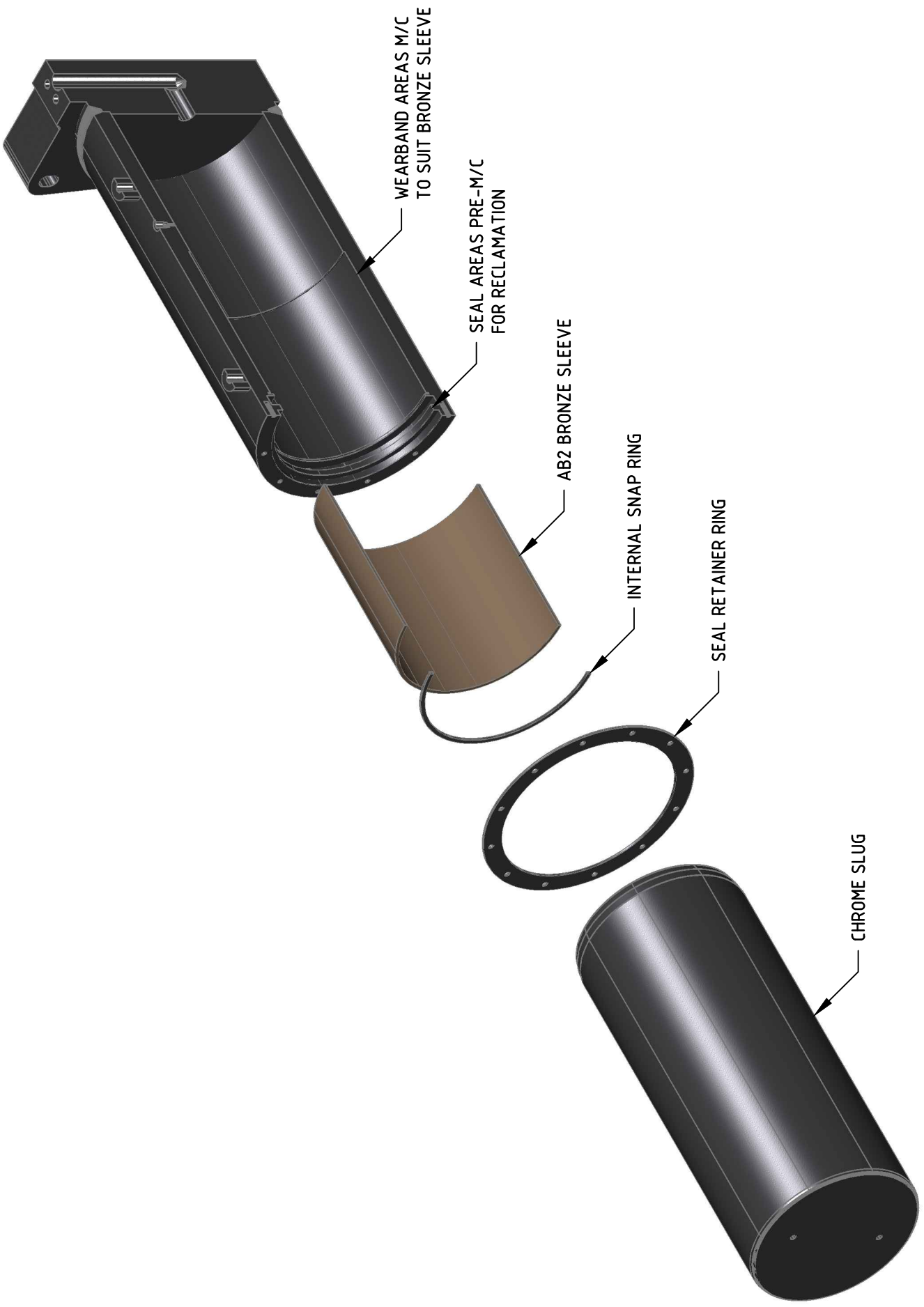
B

C

C

D

D



1

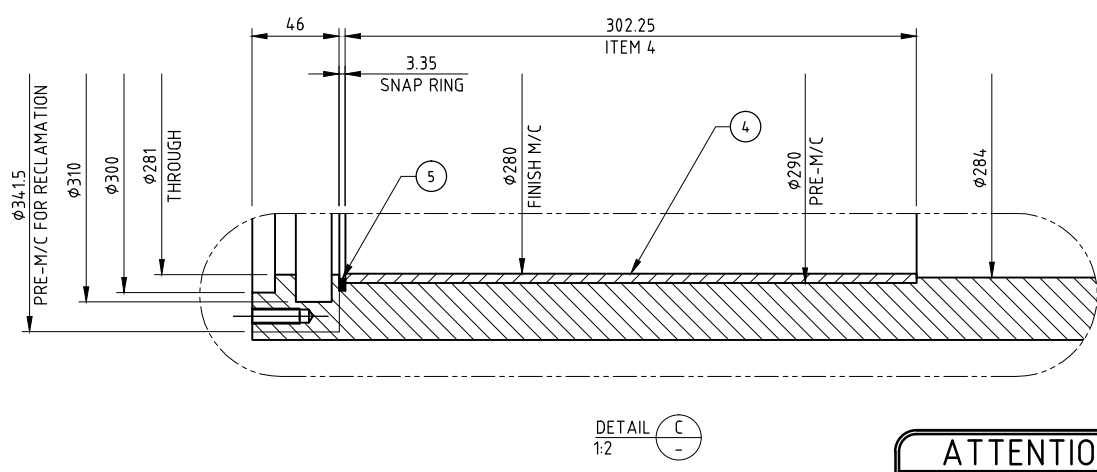
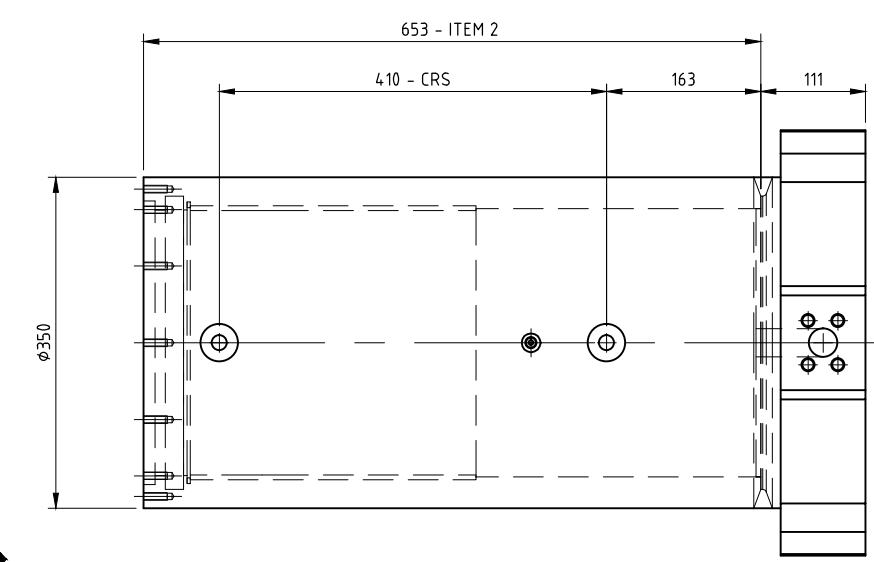
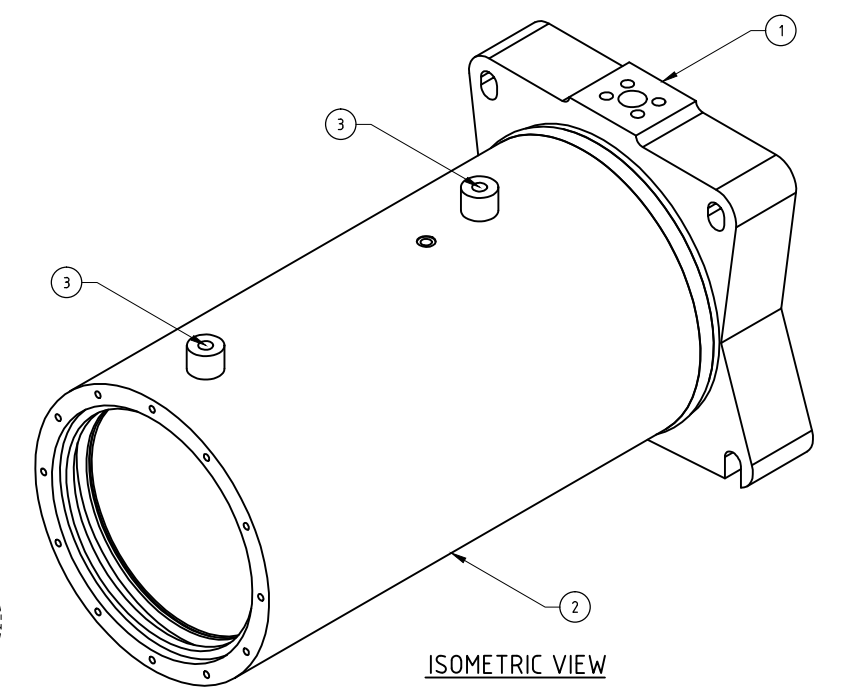
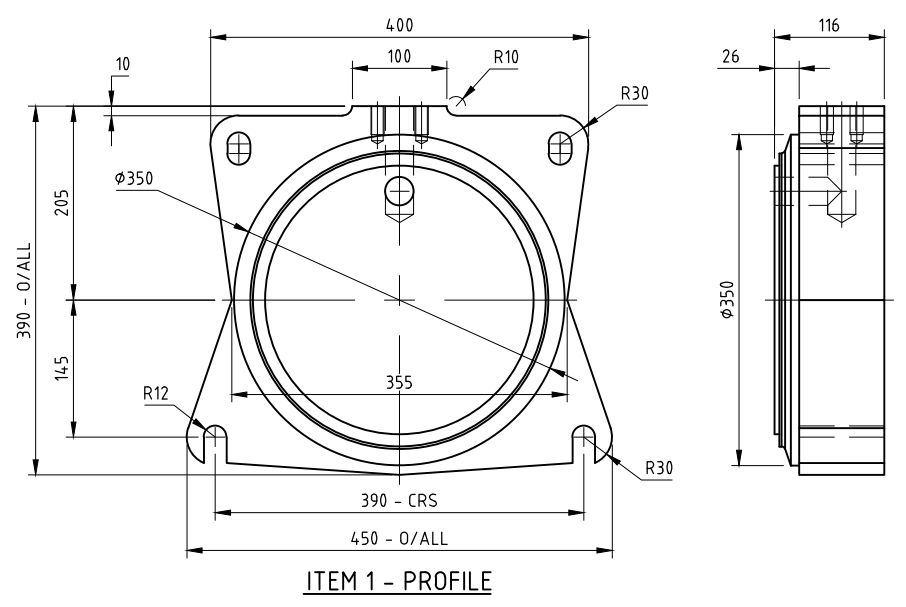
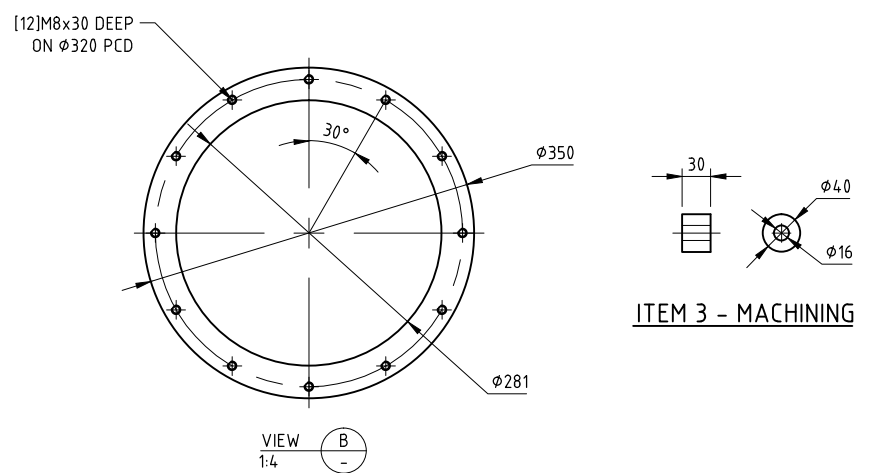
2

3

4

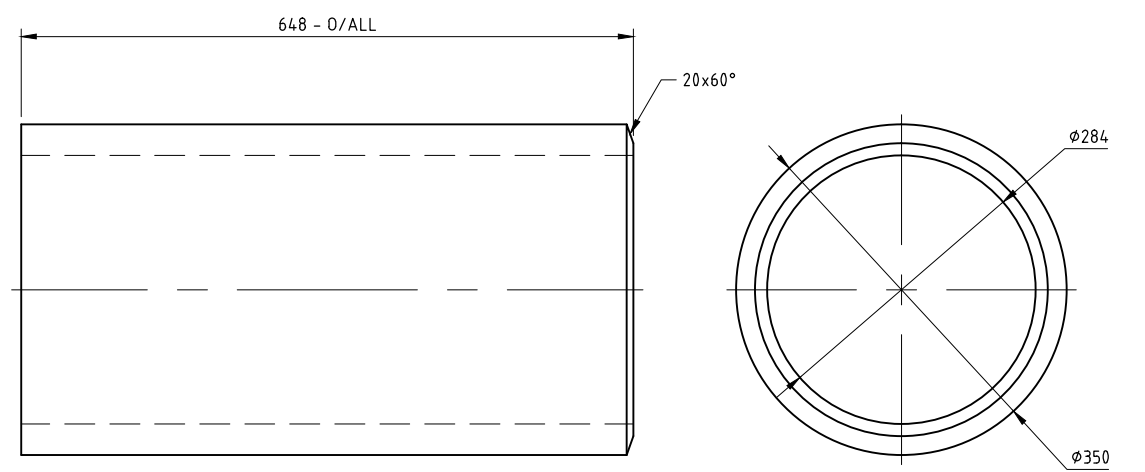
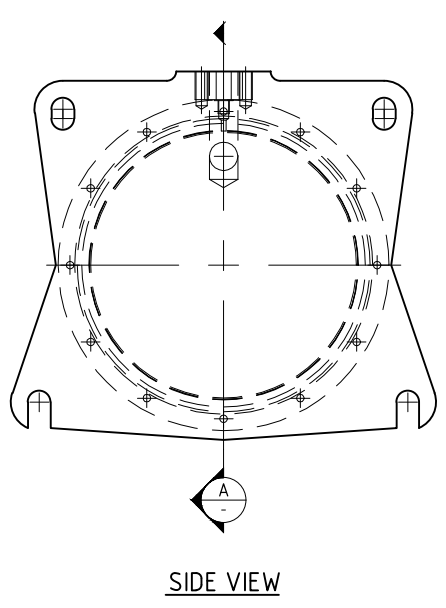
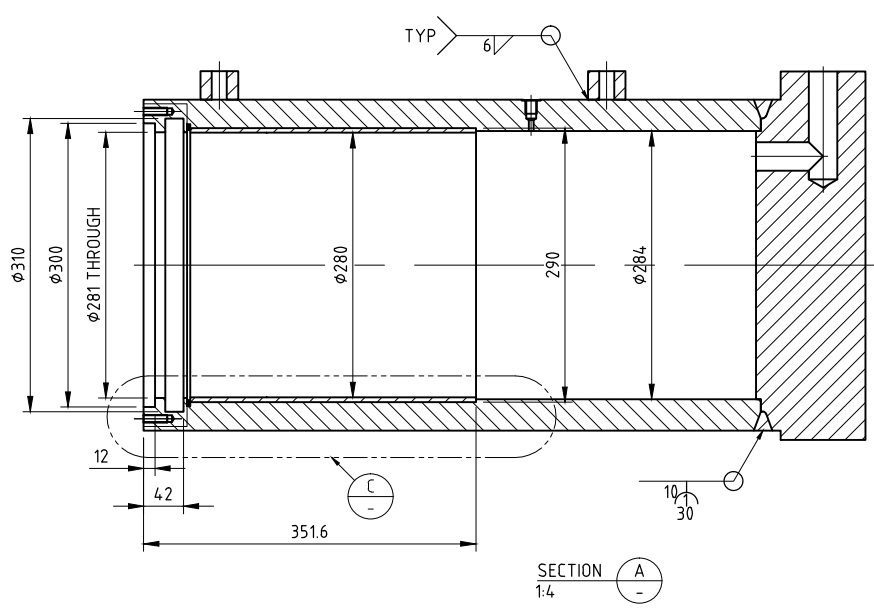
BILL OF MATERIALS

ITEM	QTY	SPEC	GRADE	DESCRIPTION	LENGTH	PRT NR	SUPPLIER	WEIGHT
1	1	AS3678	GR300	116PLx390	450		ONSTEEL	
2	1	AS1442	1045	φ350 O.D.xφ284 I.D. HB	648		INTERLOY	
3	2	AS1442	1045	φ40 RB	30		INTERLOY	
4	1		AB2	φ295 O.D.x275 I.D.	305		SPUNALOY	
5	1			INTERNAL CIRCLIP		TBA		



ATTENTION
AUSTBORE REBUILD
BRONZE RE-SLEEVE
WITH SNAP RING

- NOTES:
- ITEM 2 SHALL BE PRE-M/C TO RECLAIM SEAL AREAS
 - WEAR BAND AREA SHALL BE PRE-M/C TO SUIT ITEM 4
 - ITEM 4 SHALL BE PRE-M/C FOR INTERFERENCE FIT ON WEAR BAND AREA ON ITEM 2
 - ITEM 4 SHALL BE FINISH-M/C WITH INTERNAL SPIRAL GROOVES IN WEARBAND AREA AFTER ASSEMBLY



DRG NO.	DESCRIPTION	REVISION	DATE	BY	CHK	ENG	APP
		A	03/09/13	PRELIMINARY - ISSUE FOR CUSTOMER APPROVAL	EB		

DRAWING REFERENCE: IN THE ABSENCE OF THE APPROVED SIGNATURES, THIS DRG SHALL BE TREATED AS PRELIMINARY

TOLERANCE EXCEPT WHERE OTHERWISE STATED ON DIMENSIONS

UP TO 75	±0.075
OVER 75 UP TO 100	±0.125
OVER 100 UP TO 200	±0.25
ON ANGLES	±1°

TOLERANCE ON CAST THICKNESS ±15%

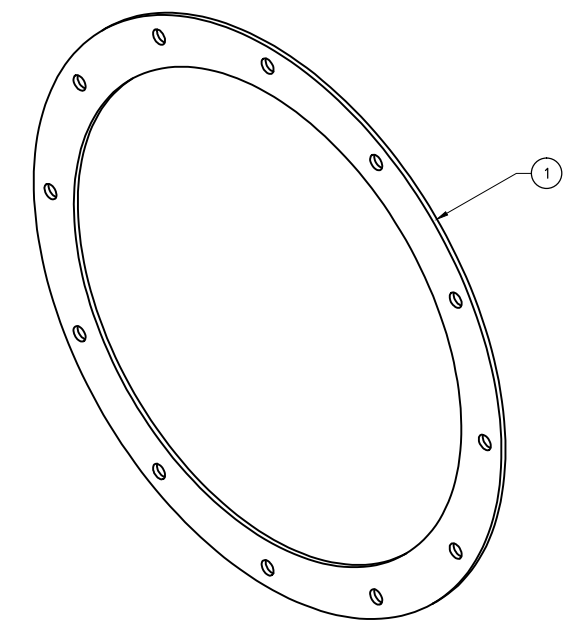
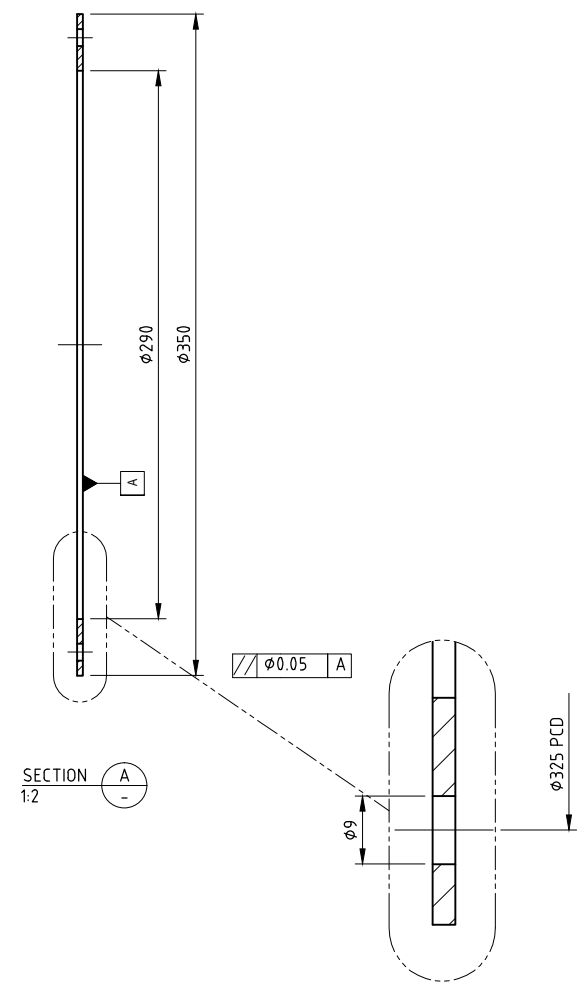
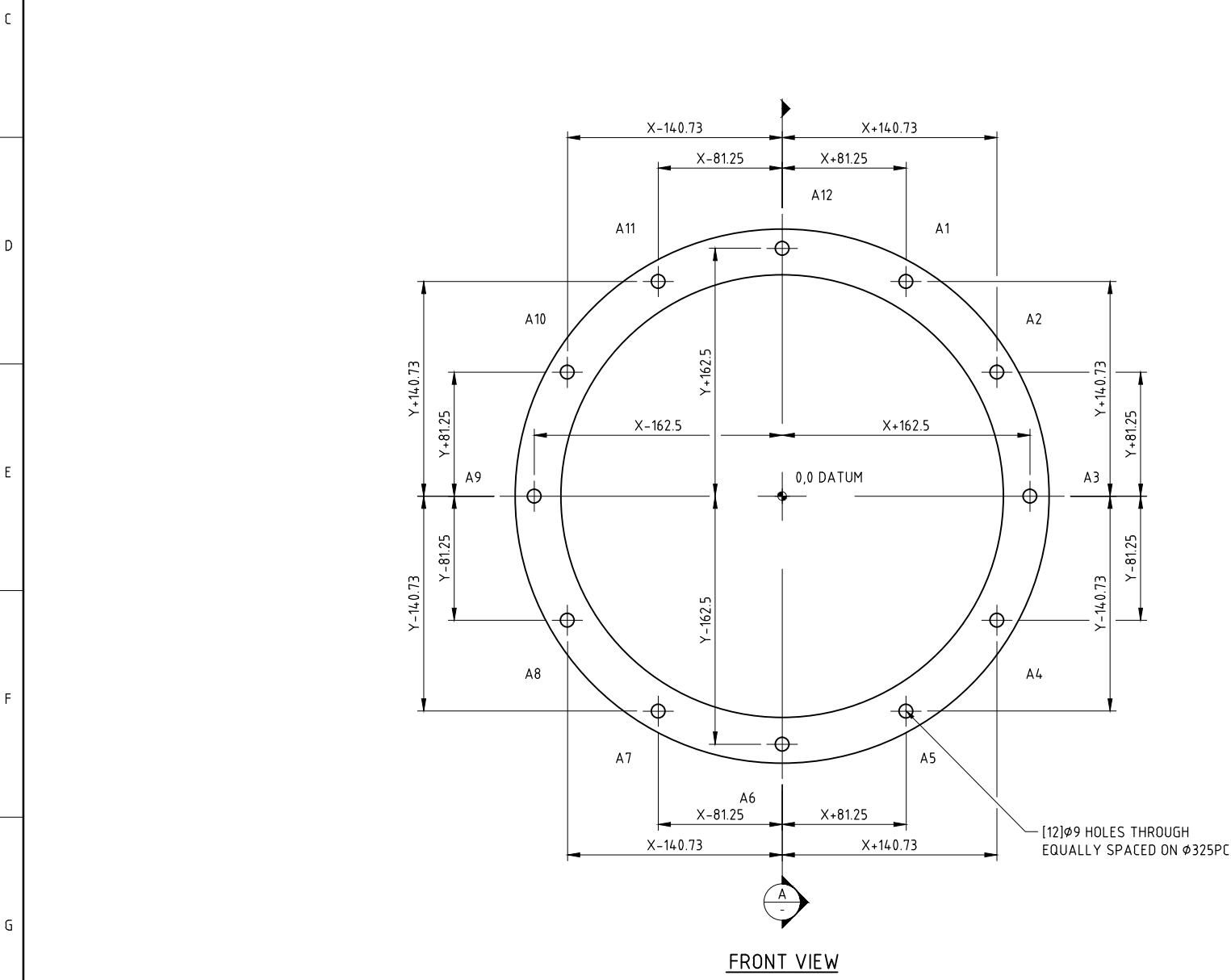


DRN	EB	DATE	03/09/13	CLIENT DRG NO	
CHKD		DATE		CLIENT	AUSTBORE
ENG		DATE		TITLE	RH200 EXCAVATOR UNDER CARRIAGE TRACK ADJUSTER BARRELL - MODIFICATION
APP		DATE			DETAIL - MACHINING
SCALE		1:4		DRG NO	AB-053-020
AS1100-1992		ALL DIMENSIONS IN mm		REV	A

Copyright ©	
This document is & shall remain the property of Austbore Ltd. The document may only be used for the purpose for which it was commissioned & in accordance with the terms of engagement for the commission, ie. as defined in 'Austbore Ltd' standard terms & conditions. Unauthorised use of this document in any way is prohibited.	

HOLE TABLE			
HOLE	XDIM	YDIM	DESCRIPTION
A1	81.25	140.73	Ø9 HOLE THROUGH
A2	140.73	81.25	Ø9 HOLE THROUGH
A3	162.5	0	Ø9 HOLE THROUGH
A4	140.73	-81.25	Ø9 HOLE THROUGH
A5	81.25	-140.73	Ø9 HOLE THROUGH
A6	0	-162.5	Ø9 HOLE THROUGH
A7	-81.25	-140.73	Ø9 HOLE THROUGH
A8	-140.73	-81.25	Ø9 HOLE THROUGH
A9	-162.5	0	Ø9 HOLE THROUGH
A10	-140.73	81.25	Ø9 HOLE THROUGH
A11	-81.25	140.73	Ø9 HOLE THROUGH
A12	0	162.5	Ø9 HOLE THROUGH

BILL OF MATERIALS									
ITEM	QTY	SPEC	GRADE	DESCRIPTION	LENGTH	PRT NR	SUPPLIER	WEIGHT	
1	1	BISALDY	80	Ø380x3PL	380				



ATTENTION
AUSTBORE REBUILD
BRONZE RE-SLEEVE
WITH SNAP RING

- NOTES:**
- ALL SURFACES MACHINED TO 3.2 ALL OVER EXCEPT WHERE OTHERWISE STATED
 - REMOVE BURRS AND SHARP EDGES
 - COAT MACHINED SURFACES WITH RUST INHIBITOR

DRG NO.	DESCRIPTION	REV	DATE	REVISION DESCRIPTION	BY	CHK	ENG	APP
		A	03/09/13	PRELIMINARY - ISSUE FOR CUSTOMER APPROVAL	EB			

DRAWING REFERENCE IN THE ABSENCE OF THE APPROVED SIGNATURES, THIS DRG SHALL BE TREATED AS PRELIMINARY

TOLERANCE EXCEPT WHERE OTHERWISE STATED ON DIMENSIONS

UP TO 75	±0.075
OVER 75 UP TO 100	±0.125
OVER 100 UP TO 200	±0.25
ON ANGLES	±1°

TOLERANCE ON CAST THICKNESS ±15%

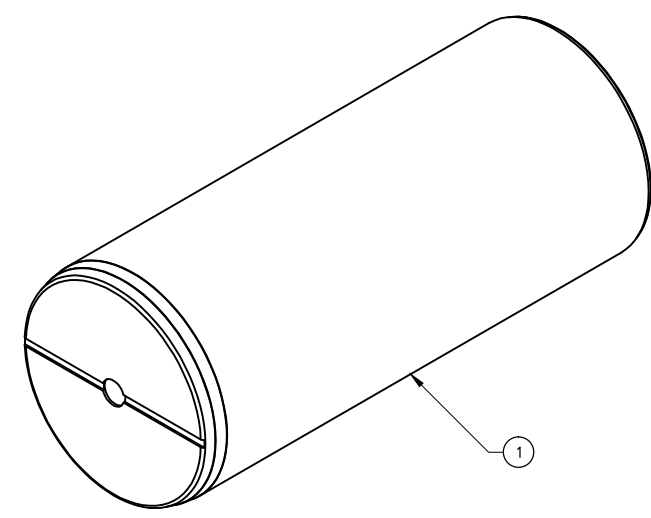
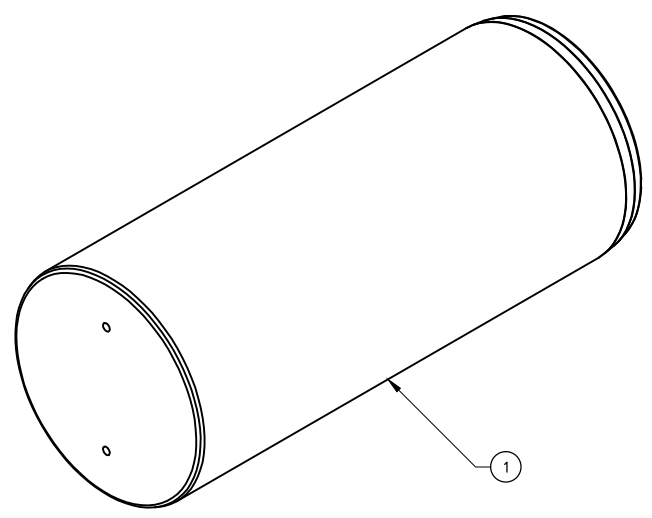


Copyright ©
This document is & shall remain the property of Austbore Ltd. The document may only be used for the purpose for which it was commissioned & in accordance with the terms of engagement for the commission, ie. as defined in 'Austbore Ltd' standard terms & conditions. Unauthorised use of this document in any way is prohibited.

DRN	EB	DATE	03/09/13	CLIENT DRG NO	
CHKD		DATE		CLIENT	AUSTBORE
ENG		DATE		TITLE	RH200 EXCAVATOR UNDER CARRIAGE TRACK ADJUSTER RETAINER
APP		DATE		DETAIL - MACHINING	
SCALE 1:10				DRG NO	AB-053-030
AS1100-1992 ALL DIMENSIONS IN mm				A1	REV A

- NOTES:**
- THIS DRAWING MUST BE READ IN CONJUNCTION WITH COMPANY PROCEDURES
 - REFER TO STANDARDS AB-000-008 & AB-000-009 FOR DETAIL ON TECHNICAL ABBREVIATIONS AND SYMBOLS
 - DIMENSIONS ARE CRITICAL AND TRUE MEASUREMENT TO BE RECORDED BESIDE DIMENSIONS
 - ALL SURFACES MACHINED TO 3.2 ALL OVER EXCEPT WHERE OTHERWISE STATED
 - REMOVE BURRS AND SHARP EDGES
 - COAT MACHINED SURFACES WITH RUST INHIBITOR

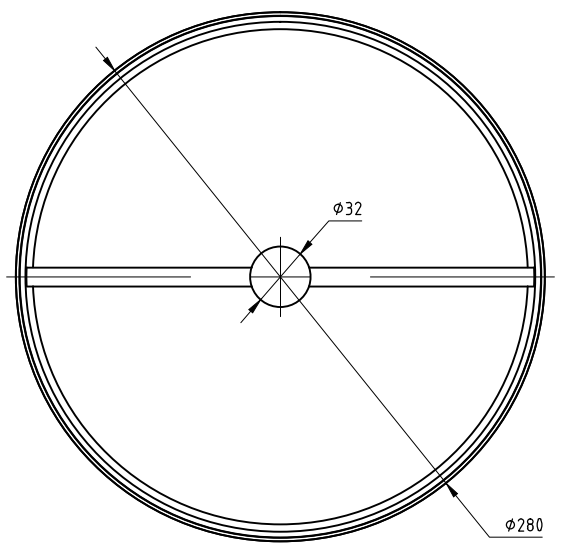
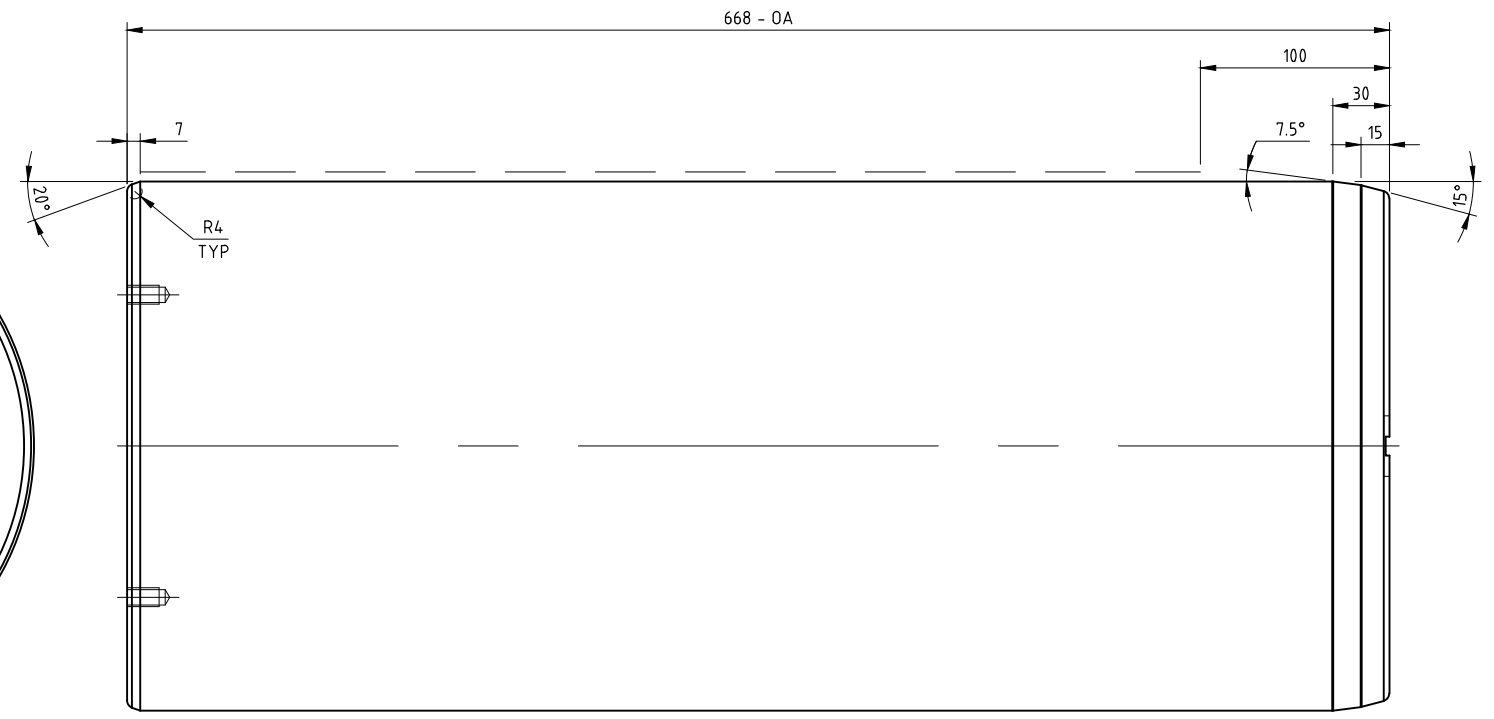
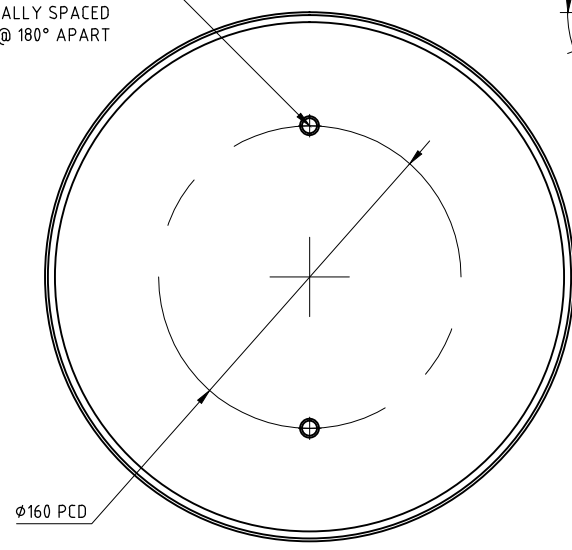
ATTENTION
 AUSTBORE REBUILD
 BRONZE RE-SLEEVE
 WITH SNAP RING



BILL OF MATERIALS									
ITEM	QTY	SPEC	GRADE	DESCRIPTION	LENGTH	PRT NR	SUPPLIER	WEIGHT	
1	1	AS1444	4340	Ø285 RB (PEELED)	675	AB-053-041	BOHLER		

QTY SHOWN FOR [1] ONLY TOTAL = KG

(2) M12 HOLES
 DRILL Ø10 x 30 DEEP
 TAP M12 x 25 DEEP
 EQUALLY SPACED
 @ 180° APART



DRG NO.	DESCRIPTION	REVI DATE	REVISION DESCRIPTION	BY	CHK	ENG	APP
		A 03/09/13	PRELIMINARY - ISSUE FOR CUSTOMER APPROVAL	EB			

IN THE ABSENCE OF THE APPROVED SIGNATURES, THIS DRG SHALL BE TREATED AS PRELIMINARY

TOLERANCE EXCEPT WHERE OTHERWISE STATED ON DIMENSIONS
 UP TO 75 ±0.075
 OVER 75 UP TO 100 ±0.125
 OVER 100 UP TO 200 ±0.25
 ON ANGLES ±1°

TOLERANCE ON CAST THICKNESS ±15%



Copyright ©
 "This document is & shall remain the property of Austbore Ltd. The document may only be used for the purpose for which it was commissioned & in accordance with the terms of engagement for the commission, ie. as defined in 'Austbore Ltd' standard terms & conditions'. Unauthorised use of this document in any way is prohibited."

DRN	EB	DATE	03/09/13	CLIENT DRG NO	
CHKD		DATE		CLIENT	AUSTBORE
ENG		DATE		TITLE	RH200 EXCAVATOR UNDER CARRIAGE TRACK ADJUSTER PISTON ROD DETAIL - MACHINING
APP		DATE		SCALE	1:4
				AS1100-1992 ALL DIMENSIONS IN mm	A1
				DRG NO	AB-053-040
				REV	A